



Winchester IWLA Newsletter

Woods, water, wildlife - our heritage, our responsibility.



www.winchester-iwla.org

March 2022

MARCH HIGHLIGHTS

A CENTURY OF IZAAK WALTON

The Izaak Walton League turns 100 this year. Visit their website to learn more - <https://www.iwla.org/100years>.

OPENING DAY

Mark March 19th on your calendars for Opening Day. See more in [Lake and Conservation](#).

MULEY FANATICS BANQUET

Muley Fanatics gives back so much to your Chapter. Please consider attending their banquet scheduled for March 19, 2022. More information, including how to get tickets, can be found in [Other News](#).

NEW GATE

Your Chapter has gotten quite fancy with a brand-new gate that includes a feminine voice with a British accent. I guess the coffee for Opening Day will be in Royal Doulton china. Read more about it in [Other News](#).

RAFFLES

Your Chapter raffled off a .308 rifle in February. More to come! See [Board Reports](#) for more.

HELP WANTED

All kinds of things are planned at your Chapter, but none can happen without you. Please reach out to anyone listed as a point of contact if you can help in any way – time, materials, labor. Thank you!

ARCHERY COMMITTEE

If you are interested in archery and want to help set up and serve on the Archery Committee for your Chapter, please contact board member Gary Tilley. He can be reached at mindbender119@hotmail.com or by phone - 314-409-5982.





Winchester IWLA Newsletter

Woods, water, wildlife - our heritage, our responsibility.



www.winchester-iwla.org

March 2022

FROM THE EDITOR



Being born and raised in the southwest, and spending nearly every summer in the Mojave Desert, snow was a novelty for me when I moved here in 2003. The novelty has worn off. I'm good. I don't need any more snow.

Your Izaak Walton League is 100 years old this year. There is a website dedicated to this event - <https://www.iwla.org/100years>. You can read about Iconic Ikes, men and women who carried forward the idea to work together to defend America's natural resources, preserving them for future generations.

Not to beat a dead horse, but do consider volunteering some of your time back to your Chapter. Nothing happens without the support and work of volunteers. Vilfredo Pareto (1848-1923) was an Italian economist and sociologist. His principle pertained to wealth distribution in a society, but empirical evidence has shown that it is applicable to human activities as well. His principle states that 80% of the work is done by 20% of the people. That would mean that your Chapter has a cadre of nearly 200 volunteers. I do not know the exact count, but I think it is about half that, with far fewer who routinely volunteer each month. Your Chapter cannot function without volunteers.

POINTS OF CONTACT

OFFICERS

- Dan Arico, President
(703) 229-3130
dan_arico@winchester-iwla.org
- Grant Javersak, Vice-President
(540) 533-0460
vp@winchester-iwla.org
- Paul Sattler, Treasurer
(516) 380-9000
treasurer@winchester-iwla.org
- James Sherry, Secretary
Jim_Sherry@winchester-iwla.org
- Peg Sattler, Membership Director
(631) 255-1917
membership@winchester-iwla.org

BOARD OF DIRECTORS

- John Suter, Board Member
(540) 364-1782
john_suter@winchester-iwla.org
- Harold Whitacre, Special Events
(540) 533-8996
harold_whitacre@winchester-iwla.org
- Garry Tilley, Board Member
(314) 409-5982
mindbender119@hotmail.com

COMMITTEE CHAIRS

- John Suter, Range Master, Rifle and Pistol
(540) 364-1782
range@winchester-iwla.org
- Rick Hill, Range Master, Shotgun
rhill1105@aol.com
- Range Master, Archery
Brian Callahan, Lake & Conservation
brian_callahan@winchester-iwla.org
- Al Stitt, Education & Training
(540) 336-2468
training@winchester-iwla.org
- Facilities
Dave Colf, Communications/Editor
(703) 401-7100
editor@winchester-iwla.org



BOARD REPORTS

Your Board of Directors met February 3rd at 7 p.m. The Membership meeting was held February 17th also at 7 p.m. Minutes for both can be found on the Chapter website under [Documents](#).

Your Chapter will be raffling off fun, outdoor equipment, such as rifles, shotguns, handguns, and compound bows, among other items. Last month, 50 tickets for a Ruger .308 rifle were sold out in 45 minutes. The next raffle starts March 3rd with tickets for sale until the March Membership meeting. Go to the Chapter website under [Chapter House > Raffle](#) to buy a raffle ticket... or many tickets. Your chances of winning get better the more you buy. Each ticket is only \$20 and all proceeds benefit your Chapter.

LAKE AND CONSERVATION REPORT

Eagle Projects

You should all be aware how much local Boy Scout troops have given to your Chapter in the form of Eagle projects. The canoe rack, fishing line recycling center, carpenter bee traps, retired flag drop center, rain garden, trails, camp sites... I could go on and on. Of note, the Tomahawk Range is done, and discussions are underway to schedule competitions. There is a fish cleaning station that is framed out and waiting on the countertop. Upcoming projects include a fire pit at the Dr Green Memorial Shotgun Range and a wood-fired pizza oven at the campground.



Opening Day

Opening Day is scheduled for March 19th. Gates open at 8 a.m. and there will be cast iron breakfast sandwiches, coffee and hot chocolate provided. Donations are welcomed, of course!

There are some monster trout in your lake. Remember – there is no catch-and-release with trout.



Spotted Lanternfly

Your Editor sat through an hour long presentation hosted by Smithsonian Conservation Biology Institute, Virginia Department of Forestry, Blue Ridge PRISM, and Virginia Working Landscapes. The topic: Spotted Lanternfly Egg Masses. Your Editor now knows how to identify the egg



masses left by the spotted lanternfly and the four instars, or stages, the insect goes through from egg to adult. The egg mass looks like a greyish splotch of spackle, and it can be on anything that is flat or mostly flat. Mostly tree trunks and branches, but they've also been found on old tires and rusty bumpers. They really seem to like rust. Go figure.

There is little difference in appearance from the first through third instar, with each stage having white spots on a black body. By the fourth instar they are red with black stripes and white spots. The adult is about the size of a cicada, but without the charm.



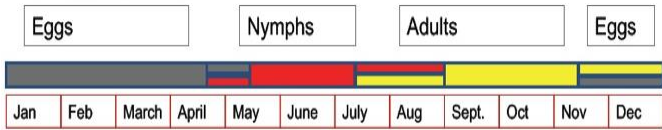
RANGE REPORT

The spotted lanternfly is an invasive species and destroys vegetation, primarily through secretions that coat leaves with a black substance that prevents photosynthesis. Because they are non-native, there are no natural predators. The best defense against these insects is destroying them on sight.



The lanternfly egg mass is distinctive. The mass on the left is the lanternfly egg mass. The one on the right belongs to the gypsy moth. Note the fuzzy finish to the gypsy moth egg mass, while the lanternfly egg mass looks like cracked spackle. If you find a lanternfly egg mass, destroy it.

There is one lanternfly generation per year, with little overlap. Right now, in March, you will only find egg masses.



Beginning in mid-April you may start to find the black with white spot nymphs. Adults won't show up until sometime around mid-July. They are the easiest to destroy between now and when they mature into adults and are able to fly.



To make the Dr Green Memorial Shotgun Range more available to the membership, we need to enlist more Shotgun RSOs. If you are interested in helping contact Rick Hill, Shotgun Range Master, or talk to one of the other RSOs while shooting and we will get you trained and qualified. You can email Rick at rhill1105@aol.com.

We would also like to open the shotgun range for outside events. This season we would like to invite groups of no more than 10 shooters. Your group could shoot any day or time except when the range is open for members. The Chapter would provide shells, clays, and rental shotguns if needed. Chapter Shotgun RSOs will also be on hand for safety, the number to be determined based on your group's size. If interested give us a call or email rhill1105@aol.com for more information.

Thanks for your interest and support, we are planning other events for 2022 and will share with you in upcoming newsletters.

*Rick Hill
Shotgun Range Master*

Dr Green Memorial Shotgun Range Hours

There has been a little confusion regarding the hours for the shotgun range, and thanks to daylight savings, now there's more. Note the new hours for Sunday below.

Day	Time
Wednesday	1 p.m. – 3 p.m.
Saturday	10 a.m. – 2 p.m.
Sunday	1 p.m. – 3 p.m.

We still need volunteers to work as RSOs at the five Rick Hill (rhill1105@aol.com) if you are interested. If you are a current RSO, you will need training on operating the wobble trap.



OTHER NEWS

New Gate!

“Gate.” Ever wonder where that word came from? “Gate.” Not to be confused with “gait,” which is something altogether different. No, this word “gate” means *opening* or *passage*. The Old English word “geat” (plural geatu) was used for “gate, door, opening, passage, hinged framework barrier,” and came from the Proto-Germanic “gatan,” which also meant an opening or passage. This likely came from the Old Saxon word “gat,” which meant the eye of a needle or hole.

Anyway. The point is our access gate has been replaced with an updated mechanism.



Friends of the Winchester Izaak Walton Chapter

Several businesses help support your Chapter through services and gifts. This list will continue to grow, and I encourage you to support them in kind as you can.

Winchester Aquarium and Pet Center

The fine folk at the Winchester Pet and Aquarium Center are responsible for testing the water sampled from Lake Neff. They provide this service freely, willingly, and cheerfully.

If you have a pet, or are interested in one, please consider doing your business with them. They give to your Chapter; we should give back at least a little. They are located at 190 Costello Drive, just down from Costco.



Mule Fanatics Foundation

The Mule Fanatic Foundation supports Mule Deer habitat projects for this declining iconic animal as well as provides youth hunts for kids with life threatening illnesses across the country. The Blue Ridge Chapter was founded by two Winchester IWLA members and is the only chapter on the East Coast. This foundation also supports keeping youth involved in the outdoors by donating a percentage of their annual banquet dinner to local youth programs.

The Winchester chapter partners with several organizations in the area with similar missions. Please help support the Mule Fanatic Foundation by attending their annual banquet on March 19, 2022, from 4:30 p.m. to 10:00 p.m. This year it is at the Shenandoah Valley Golf Club, 134 Golf Club Circle, in Front Royal.

When you're there, be sure and thank them for their previous donations to our chapter youth programs. Dave and Ron do a wonderful job of putting on a fun banquet as well as showing examples of the amazing work their group does. Tickets can be found at <https://mffbrc2022.givesmart.com>.



Chapter Facebook Page

I know this same message has been in previous newsletters, but it bears repeating. There are two Facebook pages for your Chapter. The original was set up, but the password for that page has been lost and so that page can no longer be maintained.

A second Facebook page was created recently and can be found [here](#). It is updated regularly and is your best source to know the latest goings-on with your Chapter.



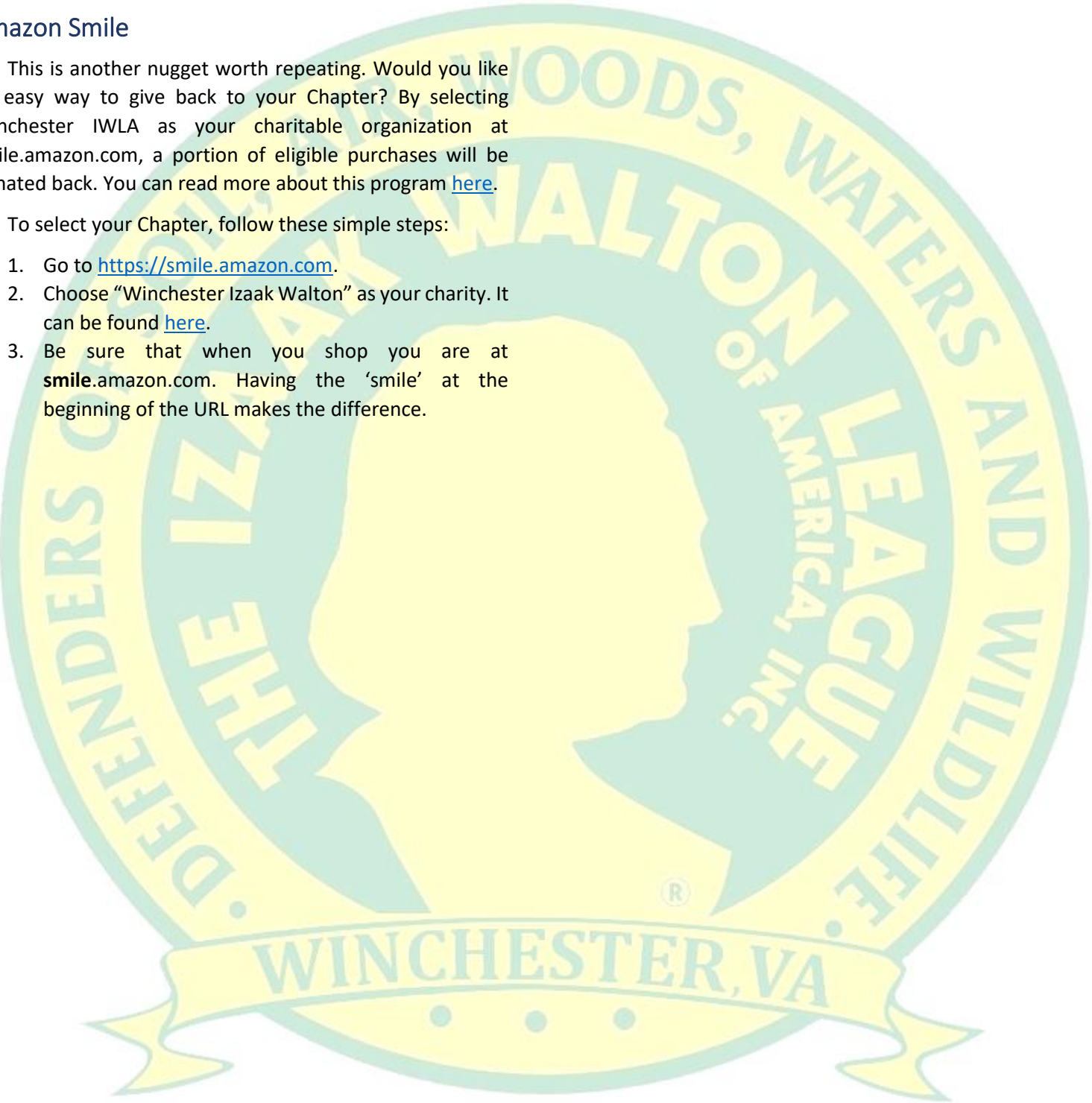
Sometimes the Chapter will be closed or events cancelled due to weather or other reasons. Be sure to check the Facebook page to check for closures or cancellations.

Amazon Smile

This is another nugget worth repeating. Would you like an easy way to give back to your Chapter? By selecting Winchester IWLA as your charitable organization at smile.amazon.com, a portion of eligible purchases will be donated back. You can read more about this program [here](#).

To select your Chapter, follow these simple steps:

1. Go to <https://smile.amazon.com>.
2. Choose “Winchester Izaak Walton” as your charity. It can be found [here](#).
3. Be sure that when you shop you are at **smile.amazon.com**. Having the ‘smile’ at the beginning of the URL makes the difference.



Opening Day



**Trout Fishing
& Breakfast**

Save the Date: Saturday March 19, 2022

